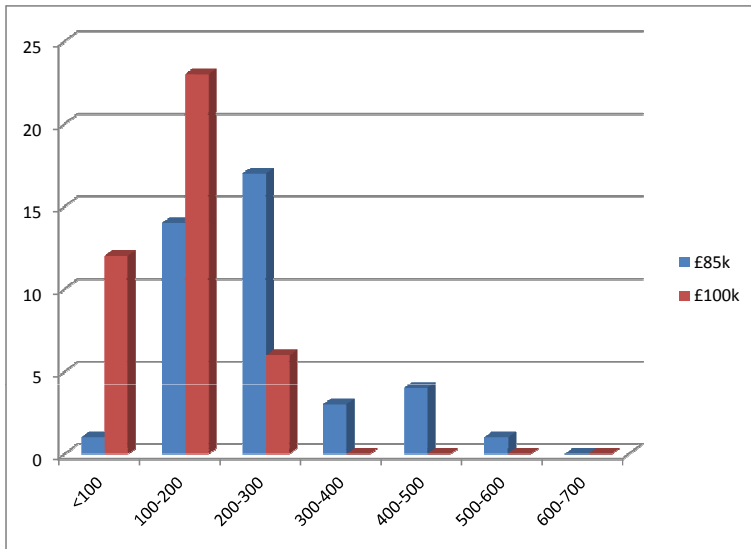


Key Messages from Consultation

| Responses | | Primary | | Secondary | |
|----------------------|--------------|--------------|--------------|--------------|--------------|
| | | Academy | Maintained | Academy | Maintained |
| Overall Responses | 101 | 5 | 77 | 12 | 7 |
| Potential Responses | 228 | 19 | 180 | 20 | 9 |
| Response Rate | 44.3% | 26.3% | 42.8% | 60.0% | 77.8% |

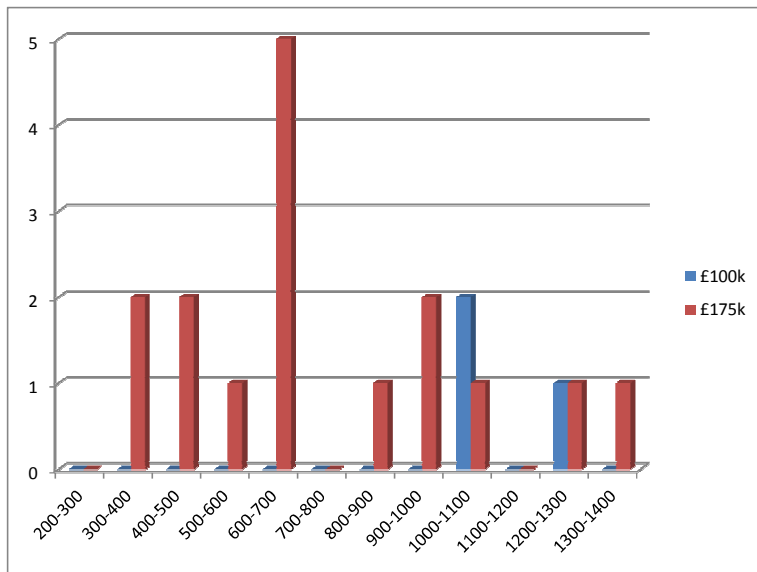
| Delegate or Retain Centrally | | Primary | Secondary |
|------------------------------|--------|---------|-----------|
| Schools Contingency | Retain | 88.2% | 100.0% |
| FSM Eligibility Service | Retain | 96.1% | 100.0% |
| SIMS Licence | Retain | 97.4% | 100.0% |
| HCSS Licence | Retain | 97.4% | 100.0% |
| Copyright Licence | Retain | 93.5% | 100.0% |
| Trade Union Duties | Retain | 94.7% | 100.0% |
| Maternity Costs | Retain | 98.7% | 100.0% |
| Ethnic Minority | Retain | 69.7% | 57.1% |
| Traveller Education | Retain | 68.8% | 42.9% |
| Primary Behaviour Support | Retain | 81.8% | 50.0% |

Lump Sum Funding - Primary Schools £85k v's £100k



| Pupil No's | £85k | £100k |
|--------------|-----------|-----------|
| <100 | 1 | 12 |
| 100-200 | 14 | 23 |
| 200-300 | 17 | 6 |
| 300-400 | 3 | 0 |
| 400-500 | 4 | 0 |
| 500-600 | 1 | 0 |
| 600-700 | 0 | 0 |
| TOTAL | 40 | 41 |
| | 49% | 51% |

Lump Sum Funding - Secondary Schools £100k v's £175k



| Pupil No's | £100k | £175k |
|--------------|----------|-----------|
| 200-300 | 0 | 0 |
| 300-400 | 0 | 2 |
| 400-500 | 0 | 2 |
| 500-600 | 0 | 1 |
| 600-700 | 0 | 5 |
| 700-800 | 0 | 0 |
| 800-900 | 0 | 1 |
| 900-1000 | 0 | 2 |
| 1000-1100 | 2 | 1 |
| 1100-1200 | 0 | 0 |
| 1200-1300 | 1 | 1 |
| 1300-1400 | 0 | 1 |
| TOTAL | 3 | 16 |
| | 16% | 84% |

Formula Funding Review Sept 13 Consultation

£85k vs £100k & £100k vs £175k

| Phase | £85K | £100K | £100K | £175K | Total responses by phase | % Responses by Phase |
|-------------------|-------|-------|-------|-------|--------------------------|----------------------|
| Primary | 36 | 41 | 4 | 15 | 77 | 42.54% |
| Secondary | 3 | 1 | 0 | 7 | 7 | 44.44% |
| Primary Academy | 4 | 1 | 1 | 1 | 5 | 10.53% |
| Secondary Academy | 2 | 2 | 3 | 9 | 12 | 60.00% |
| Grand Total | 40 | 42 | 3 | 16 | 101 | |
| | 39.6% | 41.6% | 3.0% | 15.8% | 44.30% | |

Schools Contingency - Delegated or Retained Centrally

| Phase | Delegate | Retain | Total responses by phase | % Responses by Phase |
|-------------|----------|--------|--------------------------|----------------------|
| Primary | 9 | 67 | 76 | 41.99% |
| Secondary | 0 | 7 | 7 | 77.78% |
| Grand Total | 9 | 74 | 83 | |
| | 10.8% | 89.2% | 43.92% | |

Schools Contingency - Delegated or Retained Centrally

| | |
|--------------------|----|
| Delegate-Primary | 9 |
| Delegate-Secondary | 0 |
| Retain-Primary | 67 |
| Retain-Secondary | 7 |

FSM Eligibility Service - Delegated or Retained Centrally

| Phase | Delegate | Retain | Total responses by phase | % Responses by Phase |
|-------------|----------|--------|--------------------------|----------------------|
| Primary | 3 | 74 | 77 | 42.54% |
| Secondary | 0 | 7 | 7 | 77.78% |
| Grand Total | 3 | 81 | 84 | |
| | 3.6% | 96.4% | 44.44% | |

FSM Eligibility Service - Delegated or Retained Centrally

| | |
|--------------------|----|
| Delegate-Primary | 3 |
| Delegate-Secondary | 0 |
| Retain-Primary | 74 |
| Retain-Secondary | 7 |

SIMS Licence - Delegated or Retained Centrally

| Phase | Delegate | Retain | Total responses by phase | % Responses by Phase |
|-------------|----------|--------|--------------------------|----------------------|
| Primary | 2 | 75 | 77 | 42.54% |
| Secondary | 0 | 7 | 7 | 77.78% |
| Grand Total | 2 | 82 | 84 | |
| | 2.4% | 97.6% | 44.44% | |

SIMS Licence - Delegated or Retained Centrally

| | |
|--------------------|----|
| Delegate-Primary | 2 |
| Delegate-Secondary | 0 |
| Retain-Primary | 75 |
| Retain-Secondary | 7 |

HCSS Licence - Delegated or Retained Centrally

| Phase | Delegate | Retain | Total responses by phase | % Responses by Phase |
|-------------|----------|--------|--------------------------|----------------------|
| Primary | 2 | 74 | 76 | 41.99% |
| Secondary | 0 | 7 | 7 | 77.78% |
| Grand Total | 2 | 81 | 83 | |
| | 2.4% | 97.6% | 43.92% | |

HCSS Licence - Delegated or Retained Centrally

| | |
|--------------------|----|
| Delegate-Primary | 2 |
| Delegate-Secondary | 0 |
| Retain-Primary | 74 |
| Retain-Secondary | 7 |

Copyright Licence - Delegated or Retained Centrally

| Phase | Delegate | Retain | Total responses by phase | % Responses by Phase |
|-------------|----------|--------|--------------------------|----------------------|
| Primary | 5 | 72 | 77 | 42.54% |
| Secondary | 0 | 7 | 7 | 77.78% |
| Grand Total | 5 | 79 | 84 | |
| | 6.0% | 94.0% | 44.44% | |

Copyright Licence - Delegated or Retained Centrally

| | |
|--------------------|----|
| Delegate-Primary | 5 |
| Delegate-Secondary | 0 |
| Retain-Primary | 72 |
| Retain-Secondary | 7 |

Trade Union Duties - Delegated or Retained Centrally

| Phase | Delegate | Retain | Total responses by phase | % Responses by Phase |
|-------------|----------|--------|--------------------------|----------------------|
| Primary | 4 | 72 | 76 | 41.99% |
| Secondary | 0 | 7 | 7 | 77.78% |
| Grand Total | 4 | 79 | 83 | |
| | 4.8% | 95.2% | 43.92% | |

Trade Union Duties - Delegated or Retained Centrally

| | |
|--------------------|----|
| Delegate-Primary | 4 |
| Delegate-Secondary | 0 |
| Retain-Primary | 72 |
| Retain-Secondary | 7 |

Maternity Costs - Delegated or Retained Centrally

| Phase | Delegate | Retain | Total responses by phase | % Responses by Phase |
|-------------|----------|--------|--------------------------|----------------------|
| Primary | 1 | 76 | 77 | 42.54% |
| Secondary | 0 | 7 | 7 | 77.78% |
| Grand Total | 1 | 83 | 84 | |
| | 1.2% | 98.8% | 44.44% | |

Maternity Costs - Delegated or Retained Centrally

| | |
|--------------------|----|
| Delegate-Primary | 1 |
| Delegate-Secondary | 0 |
| Retain-Primary | 76 |
| Retain-Secondary | 7 |

Ethnic Minority Achievement Service - Delegated or Retained Centrally

| Phase | Delegate | Retain | Total responses by phase | % Responses by Phase |
|-------------|----------|--------|--------------------------|----------------------|
| Primary | 23 | 53 | 76 | 41.99% |
| Secondary | 3 | 4 | 7 | 77.78% |
| Grand Total | 26 | 57 | 83 | |
| | 31.3% | 68.7% | 43.92% | |

Ethnic Minority Achievement Service - Delegated or Retained Centrally

| | |
|--------------------|----|
| Delegate-Primary | 23 |
| Delegate-Secondary | 3 |
| Retain-Primary | 53 |
| Retain-Secondary | 4 |

Traveller Education Service - Delegated or Retained Centrally

| Phase | Delegate | Retain | Total responses by phase | % Responses by Phase |
|-------------|----------|--------|--------------------------|----------------------|
| Primary | 24 | 53 | 77 | 42.54% |
| Secondary | 4 | 3 | 7 | 77.78% |
| Grand Total | 28 | 56 | 84 | |
| | 33.3% | 66.7% | 44.44% | |

Traveller Education Service - Delegated or Retained Centrally

| | |
|--------------------|----|
| Delegate-Primary | 24 |
| Delegate-Secondary | 4 |
| Retain-Primary | 53 |
| Retain-Secondary | 3 |

Primary Behaviour Support Service - Delegated or Retained Centrally

| Phase | Delegate | Retain | Total responses by phase | % Responses by Phase |
|-------------|----------|--------|--------------------------|----------------------|
| Primary | 14 | 63 | 77 | 42.54% |
| Secondary | 2 | 2 | 4 | 44.44% |
| Grand Total | 16 | 65 | 81 | |
| | 19.8% | 80.2% | 42.86% | |

Primary Behaviour Support Service - Delegated or Retained Centrally

| | |
|--------------------|----|
| Delegate-Primary | 14 |
| Delegate-Secondary | 2 |
| Retain-Primary | 63 |
| Retain-Secondary | 2 |

Formula Funding Review Sept 13 Consultation

£85k or £100k

| Phase | £85K | £100K | £100K | £175K | Total responses by NOR Band | Total in Band | % Response by Phase |
|-----------------------------|-----------|-----------|----------|-----------|-----------------------------|---------------|---------------------|
| Primary <100 | 1 | 12 | | | 13 | 39 | 33.33% |
| Primary 100-200 | 14 | 22 | | | 36 | 81 | 44.44% |
| Primary 200-300 | 16 | 6 | | | 22 | 48 | 45.83% |
| Primary 300-400 | 3 | 0 | | | 3 | 9 | 33.33% |
| Primary 400-500 | 2 | 0 | | | 2 | 3 | 66.67% |
| Primary 500-600 | 0 | 0 | | | 0 | 0 | 0.00% |
| Primary 600-700 | 0 | 0 | | | 0 | 0 | 0.00% |
| Primary Academy <100 | 0 | 0 | | | 0 | 2 | 0.00% |
| Primary Academy 100-200 | 0 | 1 | | | 1 | 9 | 11.11% |
| Primary Academy 200-300 | 1 | 0 | | | 1 | 5 | 20.00% |
| Primary Academy 300-400 | 0 | 0 | | | 0 | 0 | 0.00% |
| Primary Academy 400-500 | 2 | 0 | | | 2 | 2 | 100.00% |
| Primary Academy 500-600 | 1 | 0 | | | 1 | 1 | 100.00% |
| Primary Academy 600-700 | 0 | 0 | | | 0 | 0 | 0.00% |
| Secondary 200-300 | | | 0 | 0 | 0 | 0 | 0.00% |
| Secondary 300-400 | | | 0 | 1 | 0 | 1 | 0.00% |
| Secondary 400-500 | | | 0 | 1 | 0 | 1 | 0.00% |
| Secondary 500-600 | | | 0 | 1 | 0 | 2 | 0.00% |
| Secondary 600-700 | | | 0 | 2 | 0 | 2 | 0.00% |
| Secondary 700-800 | | | 0 | 0 | 0 | 0 | 0.00% |
| Secondary 800-900 | | | 0 | 0 | 0 | 1 | 0.00% |
| Secondary 900-1000 | | | 0 | 1 | 0 | 1 | 0.00% |
| Secondary 1000-1100 | | | 0 | 1 | 0 | 1 | 0.00% |
| Secondary 1100-1200 | | | 0 | 0 | 0 | 0 | 0.00% |
| Secondary 1200-1300 | | | 0 | 0 | 0 | 0 | 0.00% |
| Secondary 1300-1400 | | | 0 | 0 | 0 | 0 | 0.00% |
| Secondary Academy 200-300 | | | 0 | 0 | 0 | 0 | 0.00% |
| Secondary Academy 300-400 | | | 0 | 1 | 0 | 1 | 0.00% |
| Secondary Academy 400-500 | | | 0 | 1 | 0 | 1 | 0.00% |
| Secondary Academy 500-600 | | | 0 | 0 | 0 | 0 | 0.00% |
| Secondary Academy 600-700 | | | 0 | 3 | 0 | 3 | 0.00% |
| Secondary Academy 700-800 | | | 0 | 0 | 0 | 2 | 0.00% |
| Secondary Academy 800-900 | | | 0 | 1 | 0 | 2 | 0.00% |
| Secondary Academy 900-1000 | | | 0 | 1 | 0 | 2 | 0.00% |
| Secondary Academy 1000-1100 | | | 2 | 0 | 0 | 3 | 0.00% |
| Secondary Academy 1100-1200 | | | 0 | 0 | 0 | 1 | 0.00% |
| Secondary Academy 1200-1300 | | | 1 | 1 | 0 | 3 | 0.00% |
| Secondary Academy 1300-1400 | | | 0 | 1 | 0 | 2 | 0.00% |
| Grand Total | 40 | 41 | 3 | 16 | 81 | 228 | |
| | 49.4% | 50.6% | 35.53% | | | | |

Schools Contingency - Delegated or Retained Centrally

| Phase | Delegate | Retain | Total responses by NOR Band | Total in Band | % Responses by Phase |
|---------------------|----------|-----------|-----------------------------|---------------|----------------------|
| Primary <100 | 1 | 11 | 12 | 39 | 30.77% |
| Primary 100-200 | 5 | 32 | 37 | 81 | 45.68% |
| Primary 200-300 | 3 | 18 | 21 | 48 | 43.75% |
| Primary 300-400 | 0 | 3 | 3 | 9 | 33.33% |
| Primary 400-500 | 0 | 2 | 2 | 3 | 66.67% |
| Primary 500-600 | 0 | 0 | 0 | 0 | 0.00% |
| Primary 600-700 | 0 | 0 | 0 | 0 | 0.00% |
| Secondary 200-300 | 0 | 0 | 0 | 0 | 0.00% |
| Secondary 300-400 | 0 | 1 | 1 | 1 | 100.00% |
| Secondary 400-500 | 0 | 1 | 1 | 1 | 100.00% |
| Secondary 500-600 | 0 | 1 | 1 | 2 | 50.00% |
| Secondary 600-700 | 0 | 2 | 2 | 2 | 100.00% |
| Secondary 700-800 | 0 | 0 | 0 | 0 | 0.00% |
| Secondary 800-900 | 0 | 0 | 0 | 1 | 0.00% |
| Secondary 900-1000 | 0 | 1 | 1 | 1 | 100.00% |
| Secondary 1000-1100 | 0 | 1 | 1 | 1 | 100.00% |
| Secondary 1100-1200 | 0 | 0 | 0 | 0 | 0.00% |
| Secondary 1200-1300 | 0 | 0 | 0 | 0 | 0.00% |
| Secondary 1300-1400 | 0 | 0 | 0 | 0 | 0.00% |
| Grand Total | 9 | 73 | 82 | 189 | |
| | 11.0% | 89.0% | 41.21% | | |

FSM Eligibility Service - Delegated or Retained Centrally

| Phase | Delegate | Retain | Total responses by NOR Band | Total in Band | % Responses by Phase |
|---------------------|----------|--------|-----------------------------|---------------|----------------------|
| Primary <100 | 1 | 11 | 12 | 39 | 30.77% |
| Primary 100-200 | 1 | 36 | 37 | 81 | 45.68% |
| Primary 200-300 | 1 | 21 | 22 | 48 | 45.83% |
| Primary 300-400 | 0 | 3 | 3 | 9 | 33.33% |
| Primary 400-500 | 0 | 2 | 2 | 3 | 66.67% |
| Primary 500-600 | 0 | 0 | 0 | 0 | 0.00% |
| Primary 600-700 | 0 | 0 | 0 | 0 | 0.00% |
| Secondary 200-300 | 0 | 0 | 0 | 0 | 0.00% |
| Secondary 300-400 | 0 | 1 | 1 | 1 | 100.00% |
| Secondary 400-500 | 0 | 1 | 1 | 1 | 100.00% |
| Secondary 500-600 | 0 | 1 | 1 | 2 | 50.00% |
| Secondary 600-700 | 0 | 2 | 2 | 2 | 100.00% |
| Secondary 700-800 | 0 | 0 | 0 | 0 | 0.00% |
| Secondary 800-900 | 0 | 0 | 0 | 1 | 0.00% |
| Secondary 900-1000 | 0 | 1 | 1 | 1 | 100.00% |
| Secondary 1000-1100 | 0 | 1 | 1 | 1 | 100.00% |
| Secondary 1100-1200 | 0 | 0 | 0 | 0 | 0.00% |
| Secondary 1200-1300 | 0 | 0 | 0 | 0 | 0.00% |
| Secondary 1300-1400 | 0 | 0 | 0 | 0 | 0.00% |
| Grand Total | 3 | 80 | 83 | 189 | |

3.6% 96.4% 41.71%

SIMS Licence - Delegated or Retained Centrally

| Phase | Delegate | Retain | Total responses by NOR Band | Total in Band | % Responses by Phase |
|---------------------|----------|--------|-----------------------------|---------------|----------------------|
| Primary <100 | 1 | 11 | 12 | 39 | 30.77% |
| Primary 100-200 | 0 | 37 | 37 | 81 | 45.68% |
| Primary 200-300 | 0 | 22 | 22 | 48 | 45.83% |
| Primary 300-400 | 0 | 3 | 3 | 9 | 33.33% |
| Primary 400-500 | 0 | 2 | 2 | 3 | 66.67% |
| Primary 500-600 | 0 | 0 | 0 | 0 | 0.00% |
| Primary 600-700 | 0 | 0 | 0 | 0 | 0.00% |
| Secondary 200-300 | 0 | 0 | 0 | 0 | 0.00% |
| Secondary 300-400 | 0 | 1 | 1 | 1 | 100.00% |
| Secondary 400-500 | 0 | 1 | 1 | 1 | 100.00% |
| Secondary 500-600 | 0 | 1 | 1 | 2 | 50.00% |
| Secondary 600-700 | 0 | 2 | 2 | 2 | 100.00% |
| Secondary 700-800 | 0 | 0 | 0 | 0 | 0.00% |
| Secondary 800-900 | 0 | 0 | 0 | 1 | 0.00% |
| Secondary 900-1000 | 0 | 1 | 1 | 1 | 100.00% |
| Secondary 1000-1100 | 0 | 1 | 1 | 1 | 100.00% |
| Secondary 1100-1200 | 0 | 0 | 0 | 0 | 0.00% |
| Secondary 1200-1300 | 0 | 0 | 0 | 0 | 0.00% |
| Secondary 1300-1400 | 0 | 0 | 0 | 0 | 0.00% |
| Grand Total | 1 | 82 | 83 | 189 | |

1.2% 98.8% 41.71%

HCSS Licence - Delegated or Retained Centrally

| Phase | Delegate | Retain | Total responses by NOR Band | Total in Band | % Responses by Phase |
|---------------------|----------|--------|-----------------------------|---------------|----------------------|
| Primary <100 | 1 | 11 | 12 | 39 | 30.77% |
| Primary 100-200 | 0 | 37 | 37 | 81 | 45.68% |
| Primary 200-300 | 0 | 21 | 21 | 48 | 43.75% |
| Primary 300-400 | 0 | 3 | 3 | 9 | 33.33% |
| Primary 400-500 | 0 | 2 | 2 | 3 | 66.67% |
| Primary 500-600 | 0 | 0 | 0 | 0 | 0.00% |
| Primary 600-700 | 0 | 0 | 0 | 0 | 0.00% |
| Secondary 200-300 | 0 | 0 | 0 | 0 | 0.00% |
| Secondary 300-400 | 0 | 1 | 1 | 1 | 100.00% |
| Secondary 400-500 | 0 | 1 | 1 | 1 | 100.00% |
| Secondary 500-600 | 0 | 1 | 1 | 2 | 50.00% |
| Secondary 600-700 | 0 | 2 | 2 | 2 | 100.00% |
| Secondary 700-800 | 0 | 0 | 0 | 0 | 0.00% |
| Secondary 800-900 | 0 | 0 | 0 | 1 | 0.00% |
| Secondary 900-1000 | 0 | 1 | 1 | 1 | 100.00% |
| Secondary 1000-1100 | 0 | 1 | 1 | 1 | 100.00% |
| Secondary 1100-1200 | 0 | 0 | 0 | 0 | 0.00% |
| Secondary 1200-1300 | 0 | 0 | 0 | 0 | 0.00% |
| Secondary 1300-1400 | 0 | 0 | 0 | 0 | 0.00% |
| Grand Total | 1 | 81 | 82 | 189 | |

1.2% 98.8% 41.21%

Copyright Licence - Delegated or Retained Centrally

| Phase | Delegate | Retain | Total responses by NOR Band | Total in Band | % Responses by Phase |
|---------------------|----------|--------|-----------------------------|---------------|----------------------|
| Primary <100 | 1 | 11 | 12 | 39 | 30.77% |
| Primary 100-200 | 3 | 34 | 37 | 81 | 45.68% |
| Primary 200-300 | 0 | 22 | 22 | 48 | 45.83% |
| Primary 300-400 | 0 | 3 | 3 | 9 | 33.33% |
| Primary 400-500 | 0 | 2 | 2 | 3 | 66.67% |
| Primary 500-600 | 0 | 0 | 0 | 0 | 0.00% |
| Primary 600-700 | 0 | 0 | 0 | 0 | 0.00% |
| Secondary 200-300 | 0 | 0 | 0 | 0 | 0.00% |
| Secondary 300-400 | 0 | 1 | 1 | 1 | 100.00% |
| Secondary 400-500 | 0 | 1 | 1 | 1 | 100.00% |
| Secondary 500-600 | 0 | 1 | 1 | 2 | 50.00% |
| Secondary 600-700 | 0 | 2 | 2 | 2 | 100.00% |
| Secondary 700-800 | 0 | 0 | 0 | 0 | 0.00% |
| Secondary 800-900 | 0 | 0 | 0 | 1 | 0.00% |
| Secondary 900-1000 | 0 | 1 | 1 | 1 | 100.00% |
| Secondary 1000-1100 | 0 | 1 | 1 | 1 | 100.00% |
| Secondary 1100-1200 | 0 | 0 | 0 | 0 | 0.00% |
| Secondary 1200-1300 | 0 | 0 | 0 | 0 | 0.00% |
| Secondary 1300-1400 | 0 | 0 | 0 | 0 | 0.00% |
| Grand Total | 4 | 79 | 83 | 189 | |

4.8% 95.2% 41.71%

Trade Union Duties - Delegated or Retained Centrally

| Phase | Delegate | Retain | Total responses by NOR Band | Total in Band | % Responses by Phase |
|---------------------|----------|--------|-----------------------------|---------------|----------------------|
| Primary <100 | 1 | 11 | 12 | 39 | 30.77% |
| Primary 100-200 | 1 | 36 | 37 | 81 | 45.68% |
| Primary 200-300 | 0 | 21 | 21 | 48 | 43.75% |
| Primary 300-400 | 1 | 2 | 3 | 9 | 33.33% |
| Primary 400-500 | 0 | 2 | 2 | 3 | 66.67% |
| Primary 500-600 | 0 | 0 | 0 | 0 | 0.00% |
| Primary 600-700 | 0 | 0 | 0 | 0 | 0.00% |
| Secondary 200-300 | 0 | 0 | 0 | 0 | 0.00% |
| Secondary 300-400 | 0 | 1 | 1 | 1 | 100.00% |
| Secondary 400-500 | 0 | 1 | 1 | 1 | 100.00% |
| Secondary 500-600 | 0 | 1 | 1 | 2 | 50.00% |
| Secondary 600-700 | 0 | 2 | 2 | 2 | 100.00% |
| Secondary 700-800 | 0 | 0 | 0 | 0 | 0.00% |
| Secondary 800-900 | 0 | 0 | 0 | 1 | 0.00% |
| Secondary 900-1000 | 0 | 1 | 1 | 1 | 100.00% |
| Secondary 1000-1100 | 0 | 1 | 1 | 1 | 100.00% |
| Secondary 1100-1200 | 0 | 0 | 0 | 0 | 0.00% |
| Secondary 1200-1300 | 0 | 0 | 0 | 0 | 0.00% |
| Secondary 1300-1400 | 0 | 0 | 0 | 0 | 0.00% |
| Grand Total | 3 | 79 | 82 | 189 | |

3.7% 96.3% 41.21%

Maternity Costs - Delegated or Retained Centrally

| Phase | Delegate | Retain | Total responses by NOR Band | Total in Band | % Responses by Phase |
|---------------------|----------|--------|-----------------------------|---------------|----------------------|
| Primary <100 | 1 | 11 | 12 | 39 | 30.77% |
| Primary 100-200 | 0 | 37 | 37 | 81 | 45.68% |
| Primary 200-300 | 0 | 22 | 22 | 48 | 45.83% |
| Primary 300-400 | 0 | 3 | 3 | 9 | 33.33% |
| Primary 400-500 | 0 | 2 | 2 | 3 | 66.67% |
| Primary 500-600 | 0 | 0 | 0 | 0 | 0.00% |
| Primary 600-700 | 0 | 0 | 0 | 0 | 0.00% |
| Secondary 200-300 | 0 | 0 | 0 | 0 | 0.00% |
| Secondary 300-400 | 0 | 1 | 1 | 1 | 100.00% |
| Secondary 400-500 | 0 | 1 | 1 | 1 | 100.00% |
| Secondary 500-600 | 0 | 1 | 1 | 2 | 50.00% |
| Secondary 600-700 | 0 | 2 | 2 | 2 | 100.00% |
| Secondary 700-800 | 0 | 0 | 0 | 0 | 0.00% |
| Secondary 800-900 | 0 | 0 | 0 | 1 | 0.00% |
| Secondary 900-1000 | 0 | 1 | 1 | 1 | 100.00% |
| Secondary 1000-1100 | 0 | 1 | 1 | 1 | 100.00% |
| Secondary 1100-1200 | 0 | 0 | 0 | 0 | 0.00% |
| Secondary 1200-1300 | 0 | 0 | 0 | 0 | 0.00% |
| Secondary 1300-1400 | 0 | 0 | 0 | 0 | 0.00% |
| Grand Total | 1 | 82 | 83 | 189 | |

1.2% 98.8% 41.71%

Ethnic Minority Achievement Service - Delegated or Retained Centrally

| Phase | Delegate | Retain | Total responses by NOR Band | Total in Band | % Responses by Phase |
|---------------------|-----------|-----------|-----------------------------|---------------|----------------------|
| Primary <100 | 2 | 10 | 12 | 39 | 30.77% |
| Primary 100-200 | 12 | 25 | 37 | 81 | 45.68% |
| Primary 200-300 | 5 | 16 | 21 | 48 | 43.75% |
| Primary 300-400 | 2 | 1 | 3 | 9 | 33.33% |
| Primary 400-500 | 1 | 1 | 2 | 3 | 66.67% |
| Primary 500-600 | 0 | 0 | 0 | 0 | 0.00% |
| Primary 600-700 | 0 | 0 | 0 | 0 | 0.00% |
| Secondary 200-300 | 0 | 0 | 0 | 0 | 0.00% |
| Secondary 300-400 | 0 | 1 | 1 | 1 | 100.00% |
| Secondary 400-500 | 0 | 1 | 1 | 1 | 100.00% |
| Secondary 500-600 | 0 | 1 | 1 | 2 | 50.00% |
| Secondary 600-700 | 0 | 2 | 2 | 2 | 100.00% |
| Secondary 700-800 | 0 | 0 | 0 | 0 | 0.00% |
| Secondary 800-900 | 0 | 0 | 0 | 1 | 0.00% |
| Secondary 900-1000 | 0 | 1 | 1 | 1 | 100.00% |
| Secondary 1000-1100 | 0 | 1 | 1 | 1 | 100.00% |
| Secondary 1100-1200 | 0 | 0 | 0 | 0 | 0.00% |
| Secondary 1200-1300 | 0 | 0 | 0 | 0 | 0.00% |
| Secondary 1300-1400 | 0 | 0 | 0 | 0 | 0.00% |
| Grand Total | 22 | 60 | 82 | 189 | |
| | 26.8% | 73.2% | 41.21% | | |

Traveller Education Service - Delegated or Retained Centrally

| Phase | Delegate | Retain | Total responses by NOR Band | Total in Band | % Responses by Phase |
|---------------------|-----------|-----------|-----------------------------|---------------|----------------------|
| Primary <100 | 2 | 10 | 12 | 39 | 30.77% |
| Primary 100-200 | 12 | 25 | 37 | 81 | 45.68% |
| Primary 200-300 | 5 | 17 | 22 | 48 | 45.83% |
| Primary 300-400 | 3 | 0 | 3 | 9 | 33.33% |
| Primary 400-500 | 1 | 1 | 2 | 3 | 66.67% |
| Primary 500-600 | 0 | 0 | 0 | 0 | 0.00% |
| Primary 600-700 | 0 | 0 | 0 | 0 | 0.00% |
| Secondary 200-300 | 0 | 0 | 0 | 0 | 0.00% |
| Secondary 300-400 | 0 | 1 | 1 | 1 | 100.00% |
| Secondary 400-500 | 1 | 0 | 1 | 1 | 100.00% |
| Secondary 500-600 | 0 | 1 | 1 | 2 | 50.00% |
| Secondary 600-700 | 1 | 1 | 2 | 2 | 100.00% |
| Secondary 700-800 | 0 | 0 | 0 | 0 | 0.00% |
| Secondary 800-900 | 0 | 0 | 0 | 1 | 0.00% |
| Secondary 900-1000 | 1 | 0 | 1 | 1 | 100.00% |
| Secondary 1000-1100 | 1 | 0 | 1 | 1 | 100.00% |
| Secondary 1100-1200 | 0 | 0 | 0 | 0 | 0.00% |
| Secondary 1200-1300 | 0 | 0 | 0 | 0 | 0.00% |
| Secondary 1300-1400 | 0 | 0 | 0 | 0 | 0.00% |
| Grand Total | 27 | 56 | 83 | 189 | |
| | 32.5% | 67.5% | 41.71% | | |

Primary Behaviour Support Service - Delegated or Retained Centrally

| Phase | Delegate | Retain | Total responses by NOR Band | Total in Band | % Responses by Phase |
|---------------------|-----------|-----------|-----------------------------|---------------|----------------------|
| Primary <100 | 1 | 11 | 12 | 39 | 30.77% |
| Primary 100-200 | 5 | 32 | 37 | 81 | 45.68% |
| Primary 200-300 | 5 | 17 | 22 | 48 | 45.83% |
| Primary 300-400 | 2 | 1 | 3 | 9 | 33.33% |
| Primary 400-500 | 1 | 1 | 2 | 3 | 66.67% |
| Primary 500-600 | 0 | 0 | 0 | 0 | 0.00% |
| Primary 600-700 | 0 | 0 | 0 | 0 | 0.00% |
| Secondary 200-300 | 0 | 0 | 0 | 0 | 0.00% |
| Secondary 300-400 | 0 | 0 | 0 | 1 | 0.00% |
| Secondary 400-500 | 1 | 0 | 1 | 1 | 100.00% |
| Secondary 500-600 | 0 | 0 | 0 | 2 | 0.00% |
| Secondary 600-700 | 1 | 1 | 2 | 2 | 100.00% |
| Secondary 700-800 | 0 | 0 | 0 | 0 | 0.00% |
| Secondary 800-900 | 0 | 0 | 0 | 1 | 0.00% |
| Secondary 900-1000 | 0 | 0 | 0 | 1 | 0.00% |
| Secondary 1000-1100 | 0 | 1 | 1 | 1 | 100.00% |
| Secondary 1100-1200 | 0 | 0 | 0 | 0 | 0.00% |
| Secondary 1200-1300 | 0 | 0 | 0 | 0 | 0.00% |
| Secondary 1300-1400 | 0 | 0 | 0 | 0 | 0.00% |
| Grand Total | 16 | 64 | 80 | 189 | |
| | 20.0% | 80.0% | 40.20% | | |

Consultation Comments

Appendix 5

| Type of School | £85k or £100k | £100k or £175k | Delegated or retained | S - £85k or £100k | S2 - £100k or £175k | S3 - Delegated or Retained | General |
|---------------------|---------------|----------------|-----------------------|---|--|--|--|
| 1 Secondary Academy | | £100k | | | £100k - Equal for primary & secondary which will in turn deal with sparsity factors not being adopted by Wiltshire | | |
| 2 Primary | £85k | | mixed | | | The level of support that the school has received from these services is very low. The departments concerned have obviously suffered reductions in the number of staff consequential reductions in the level of services they provide. We would like these services to be delegated out to schools, that we are enabled to obtain best value for this expenditure for our pupils | We wish once again to express our concern over the use of MFG formula & the resulting cap on some schools budget increase using the new funding formulae (with the aim of having a fairer national funding formulae). It is clear that central government's spending policies are targeted at reducing the number of unsustainably small schools, in order to achieve the best outcomes for children by educating them in schools large enough to obtain maximum efficiency for the resources expended. This appears to be laudable initiative, but is being thwarted by Wiltshire's attempt to artificially spoor small schools (without funding this fairly) thus reducing using the budget from other schools (thus reducing the funds available to spend on pupils in some school) In our opinion this is a short-term response, when the restructuring of Wiltshire's education system is clearly the required solution. The education needs of the county's children would be better served by allowing the unsustainable schools to reduce and to arrange transport as required. We reject the council's position that primary schools are 'necessary' when the nearest alternative is more than 2 miles away. This is clearly an unsustainable position. |
| 3 Primary | £100k | | retain | We are a small school with limited budget and therefore limited buying power. The larger the amount of money we can rely on the better | | | |
| 4 Primary | £100k | | mixed | | | | How does the sparsity factor work if you are separate infant/junior schools but the only phase school with 2 miles? We are not below 145 pupils but it would seem unfair for both be classed as primary |
| 5 Primary | £85k | | retain | Having attended the consultation meeting on 12/9/13 I understand the need for the £85k lump sum | | Essential that services such as behaviour support is retained centrally | |
| 6 Secondary | | £175k | retain | | | The school is a supporter of acquiring central services where these would be marketed by the local authority and those that remain closely aligned to the | The change in funding in the superior financial show a further year on year reduction in the funding made available to our school of around £36,850 per annum in 2014/15. The school recognises the potential value of national funding formula reviews but yet again we are hugely |
| 7 Secondary | | £175k | mixed | | We feel £85 is an appropriate lump sum for the smallest primary and allows larger primaries to attract sufficient funding through AWPUs. We feel that £175 is an appropriate sum for the basic secondary school provision, given the average size of secondaries in Wiltshire. | | |
| 8 Secondary Academy | | £175k | | | | | I thank you for the opportunity on the proposed changes for 2014-15, and thank you too for demonstrating the notional effect upon 2013-14 funding. With respect to this latter part, however, we have the following observations: Notwithstanding that this exercise is largely illustrative, your figures differ from our EFA GAG statement in the following ways (without prejudice): You show a rates element of £15,760 – This is not shown on our GAG statement You do not show an amount for English as an additional language (EAL) – Our GAG shows £3,616 You show a MFG amount of £182,965 – our GAG statement shows £184,194 |
| 9 Primary | | £100k | mixed | As a relatively small school our numbers do not permit the increased AWPUs to offset a £15,000 reduction in funding. Our pupil numbers have increased recently to 123 but we would still need 51 more to balance this | | | |
| 10 Secondary | | £175k | retain | | | Schools will not be able to self fund these services with the small sum that will be delegated out, Maternity alone will cause major hardship | The lump sum appears to be taken back in part by decreasing other funding lines |
| 11 Primary | £100k | | retain | | | | The proposal to further reduce the lump sum makes our already unviable financial position even worse. And this is despite assurances from the DfE that the national formula changes should not have the unintended consequences of closing small schools. When our MP raised the matter with the secretary of State last February, David Laws (Schools Minister) replied that "...we have said that local authorities should be allowed to allocate a lump sum to ensure that schools, especially small schools like xx (us), have a safety net knowing that their basic operating costs will be met....We are clear that budget changes should not be unmanageable for schools...." We recognise that no amount of tweaking of the formula will address the special, possibly unique, situation at xx (our school) and urge the authority to continue to take steps to find a way of securing our future viability. |
| 12 Primary | £100k | | retain | £100k is the best option for smaller schools | | | We were disappointed that Wiltshire did not implement the sparsity factor, it may have been complex but it would have helped small rural schools in the south of the county |

| | | | | | | | | |
|----|---------|-------|--|--------|---|--|---|--|
| 13 | Primary | £85k | | retain | As our pupil numbers are rising we prefer a smaller lump sum which attracts a higher per pupil rate, which in turn, generates greater DSG for our school. | | | |
| 14 | Primary | £85k | | retain | After attending the consultation briefing, we understand the reduction and allows an increase in the AWP. Although we did not positively benefit from this until out numbers are 174+ | | As a school, we benefit from EMAS, Traveller Education Service and Behaviour Support Services. If these funds were delegated, our worry would be the number of schools that did NOT buy into them, thus making them untenable within the LA. If these services were to cease we would have to source them elsewhere which could be potentially more expensive and of an inferior quality. They are vital to the pupils of our school. | The explanation as to why the LA was not using sparsity and mobility as a factor was well explained at the consultation briefing and we fully support this decision |
| 15 | Primary | £100k | | retain | | | We are in favour of retaining these budgets/services centrally for 2 reasons, both of which impact particularly on small schools like ours: There is a hidden cost to each school if these are delegated, in terms of providing the time and expertise required to exercise diligence in ensuring best value, compliance and appropriate provision. If delegated, we would have to look at group arrangements (eg cluster) but there would still be significant additional overheads. We are concerned that delegation would result in WC services shrinking or disappearing completely, forcing us to source them elsewhere, exacerbating the first point above. When sourcing from third party suppliers, sustainability can also be a cause for concern. | Our preferences and comments are driven by our top priority as a small school, which is to maintain our viability, especially in the current economic climate, when budgets are tight. Staffing of fluctuating numbers on roll as far as possible, in order to provide consistent staffing and staff levels from year to year. |
| 16 | Primary | £100k | | retain | As a small school with 120 on roll the negative impact of the lump sum falling is significant. Whilst the MFG would cushion the impact for the first year, it still equates to a lower level of funding. This is on top of the reduction in funding that was the outcome of the last funding reform. | | | |
| 17 | Primary | £100k | | retain | | | | We are a small village primary school, and our budget is already tight, so any further reduction will cause increases pressure on this budget, and would mean that cuts would be necessary, which may affect the quality of the childrens education. In future years, if the MFG is reduced and the budget cut further the viability of the school would be in question. As a community, it is important for us to be able to offer children a school place in the village where they live |
| 18 | Primary | £100k | | retain | Small school, tight budget already, fluctuating numbers on roll | | | The impact statement on the new proposals indicates a reduction in budget of £4,500 which will have an adverse impact on the schools capacity to deliver services/pay teaching assistants etc |
| 19 | Primary | £100k | | retain | Headteacher and governing bodies of small schools are constantly under pressure to maintain numbers and compete with each others and not on childrens education | | | |
| 20 | Primary | £100k | | retain | We are a small school - hence choice stronger outcome for our budget & resourcing | | Again as a small primary school we are hugely value these services being offered centrally. | |
| 21 | Primary | £85k | | retain | These services need to be maintained. Delegation will mean they cannot be supported in the future. | | | I agree with not including mobility and sparsity for the reasons given in the consultation |
| 22 | Primary | £100k | | retain | | | Particularly concenered about the viability of Behaviour support service should this be delegated. Very valuable service | |
| 23 | Primary | £85k | | mixed | From the impact statement, it is that we will have a formula gain and therefore the impact of whatever we choose will be capped anyway. That said, we would prefer to keep the lump sum at the lower amount of £85k and then receive a higher per pupil amount. | | | |
| 24 | Primary | £100k | | retain | If we accept the lump sum of £85k our overall loss would be £4,664 | | | |
| 25 | Primary | £100k | | retain | As a primary school head I don't feel I can do other than tick £100k. We all need more resources. However, reading thorough section A I rather assumed if the secondary schools were to receive £175k then the primaries would only get £85k. I believe this is probably the correct way round if it is a £85k-£175k limited pot. | | As a new head, and a new to Wiltshire Head I feel strongly that these services are available to me but managed centrally. I have plenty to do already without having to go out and reseroces myself support for minirity ethnic groups for example. | |
| 26 | Primary | £100k | | mixed | Our small school has had a £5000+ funding cut last year & is forecast additional similar cut this year. The larger lump sum would benefit our school. | | We find it particularly useful to have centrally retained behaviour support services, as a small school we would find it difficult to find the required level of services to help & support children with challenging behaviour and statements. We have a high level of need and the formula funding does not sufficiently cover the costs in the small school | Can consultation occur earlier in the year to aid budget planning. In future will there be viable alternatives and choice for individual schools rather than blanket funding. |

| | | | | | | | |
|----|-------------------|---------|-------|--------|--|---|--|
| 27 | Primary | £100k | | retain | As a small rural primary, any reduction in this amount would have a significant impact on our budget | We value the above services and consider that these services need to be central to avoid additional costs to schools by private companies and additional bureaucracy for admin officers in small schools | As a school in a rural area and low social deprivation levels, we do not receive additional funding through FSM. We also have small numbers of pupil premium children. This years funding has led to redundancies and further reduction in the lump sum. |
| 28 | Primary | £100k | | mixed | With rising rolls in primary schools the larger lump sum is more helpful when schools' budgets are trailing behind rising pupil numbers | | |
| 29 | Secondary Academy | | £100k | | | We are concerned about the reduction in AWPU. Although we would gain by the proposed change in the short term, maintaining the current level of AWPU is more important for long term budget stability than the value of the lump sum | |
| 30 | Primary | £100k | | mixed | Helps stabilise funding between years. As an INFANTS 1/3 of school changes each year | | |
| 31 | Primary | no vote | | mixed | | | Everything you have suggested seems fair - I attended the roadshow and found the information and explanations to be most useful - consequently I have very little to add. I suppose my only query would be that of many heads - at what point will the LA not be viable in terms of supporting schools as well as it does - what will be the tripping point for academy conversion when remaining delegated funds are no longer sufficient. Don't worry am not expecting an answer! Many thanks for the wrk that has gone into this in a very short period |
| 32 | Primary | £100k | | mixed | A larger guaranteed lump sum gives us more security in setting our budget, rather than having to rely on other factors to recoup the £15k difference between this and the lower figure | Our preferences above reflect our focus on delivering the best we can for each child on a personal basis. As a high maintenance administration school - mainstream plus 2 Resource Bases. We need to ensure that administration issue support the child and family directly. We therefore prefer to delegate mundane admin costs which do not need reference to context of each child to the Local authority. The areas we have expressed preference in de-delegating, are those where we wish to have more autonomy in choice of personnel deployed and the option to work more collaboratively within the cluster | |
| 33 | Secondary Academy | | £175k | | | There should be greater differential between the lump sum offered to primary schools and to secondaries. Ideally an even larger figure than £175 should be made available but I realised this is not an option | I would agree with the decision not to include pupil mobility and sparsity within the formula. I am concerned at the aspect regarding lump sum allowances and whilst MFG provides some protection, I would have preferred a greater figure through this source |
| 34 | Secondary Academy | | £175k | | | The lump sum should be applied to all secondary schools not on a pro-rotas basis as per the previous flat rate | |
| 35 | Primary Academy | £85k | | | Lower value will help the secondary schools have a higher value which is fairer due to size | | |

Summary of Funding Per Pupil under each lump sum option for Primary Schools

| URN | LAESTAB | 13-14 MFG NOR (NOR-reception) | £85k Formula funding pre-MFG | Per pupil funding NOR less reception | £100k Formula funding pre-MFG | Per pupil funding NOR less reception | Difference between two sets |
|--------|---------|-------------------------------|------------------------------|--------------------------------------|-------------------------------|--------------------------------------|-----------------------------|
| 126492 | 8655218 | 314.00 | £1,108,329 | £3,529.71 | £1,123,329 | £3,577.48 | £47.77 |
| 126373 | 8653203 | 306.00 | £1,061,938 | £3,470.39 | £1,076,938 | £3,519.41 | £49.02 |
| 126350 | 8653150 | 301.00 | £1,085,867 | £3,607.53 | £1,100,867 | £3,657.36 | £49.83 |
| 126291 | 8652225 | 266.00 | £975,409 | £3,666.95 | £990,409 | £3,723.34 | £56.39 |
| 126476 | 8655202 | 258.00 | £987,614 | £3,827.96 | £1,002,614 | £3,886.10 | £58.14 |
| 126398 | 8653319 | 253.00 | £882,382 | £3,487.68 | £897,382 | £3,546.96 | £59.29 |
| 126309 | 8653022 | 241.00 | £872,715 | £3,621.22 | £887,715 | £3,683.47 | £62.24 |
| 138109 | 8655213 | 208.00 | £732,929 | £3,523.70 | £747,929 | £3,595.81 | £72.12 |
| 126425 | 8653425 | 202.00 | £746,731 | £3,696.69 | £761,731 | £3,770.94 | £74.26 |
| 137426 | 8655204 | 199.00 | £705,742 | £3,546.44 | £720,742 | £3,621.82 | £75.38 |
| 126359 | 8653166 | 157.00 | £601,530 | £3,831.40 | £616,530 | £3,926.94 | £95.54 |
| 126392 | 8653300 | 150.00 | £577,631 | £3,850.87 | £592,631 | £3,950.87 | £100.00 |
| 126339 | 8653123 | 149.00 | £593,805 | £3,985.27 | £608,805 | £4,085.94 | £100.67 |
| 126417 | 8653400 | 105.00 | £408,834 | £3,893.66 | £423,834 | £4,036.51 | £142.86 |
| 126436 | 8653450 | 105.00 | £419,238 | £3,992.75 | £434,238 | £4,135.60 | £142.86 |
| 126430 | 8653435 | 98.00 | £394,622 | £4,026.76 | £409,622 | £4,179.82 | £153.06 |
| 126403 | 8653352 | 58.00 | £262,897 | £4,532.70 | £277,897 | £4,791.32 | £258.62 |
| 126327 | 8653086 | 54.00 | £254,323 | £4,709.69 | £269,323 | £4,987.46 | £277.78 |
| 138629 | 8652040 | 51.00 | £250,691 | £4,915.52 | £265,691 | £5,209.64 | £294.12 |
| 126343 | 8653134 | 49.00 | £234,912 | £4,794.12 | £249,912 | £5,100.24 | £306.12 |